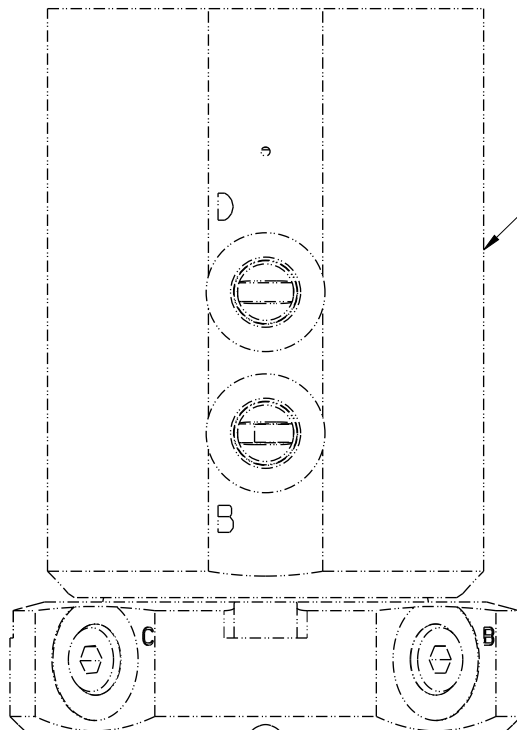


1

2

B

B




NOT FIELD SERVICEABLE.
 These Rotary Unions can
 be factory refurbished
 at any authorized
 Vektek repair facility.



A

A

No.	QTY	PART No.	DESCRIPTION
1	4	39000050	O-RING, (-204)

PARTS LIST	 VEKTEK <small>VEKTEK, INC. 1334 E. SIXTH AVE. P.O. BOX 625 EMPORIA, KS. 66801 U.S.A.</small>			
	PARTS LIST, ASSY, HDx UNION, OP			
ASSEMBLIES AFFECTED 32-4244-02 32-4264-02	<table border="1"> <tr> <td>SIZE A</td> <td style="font-size: 2em;">PL3214</td> <td>REV B</td> </tr> </table>	SIZE A	PL3214	REV B
SIZE A	PL3214	REV B		

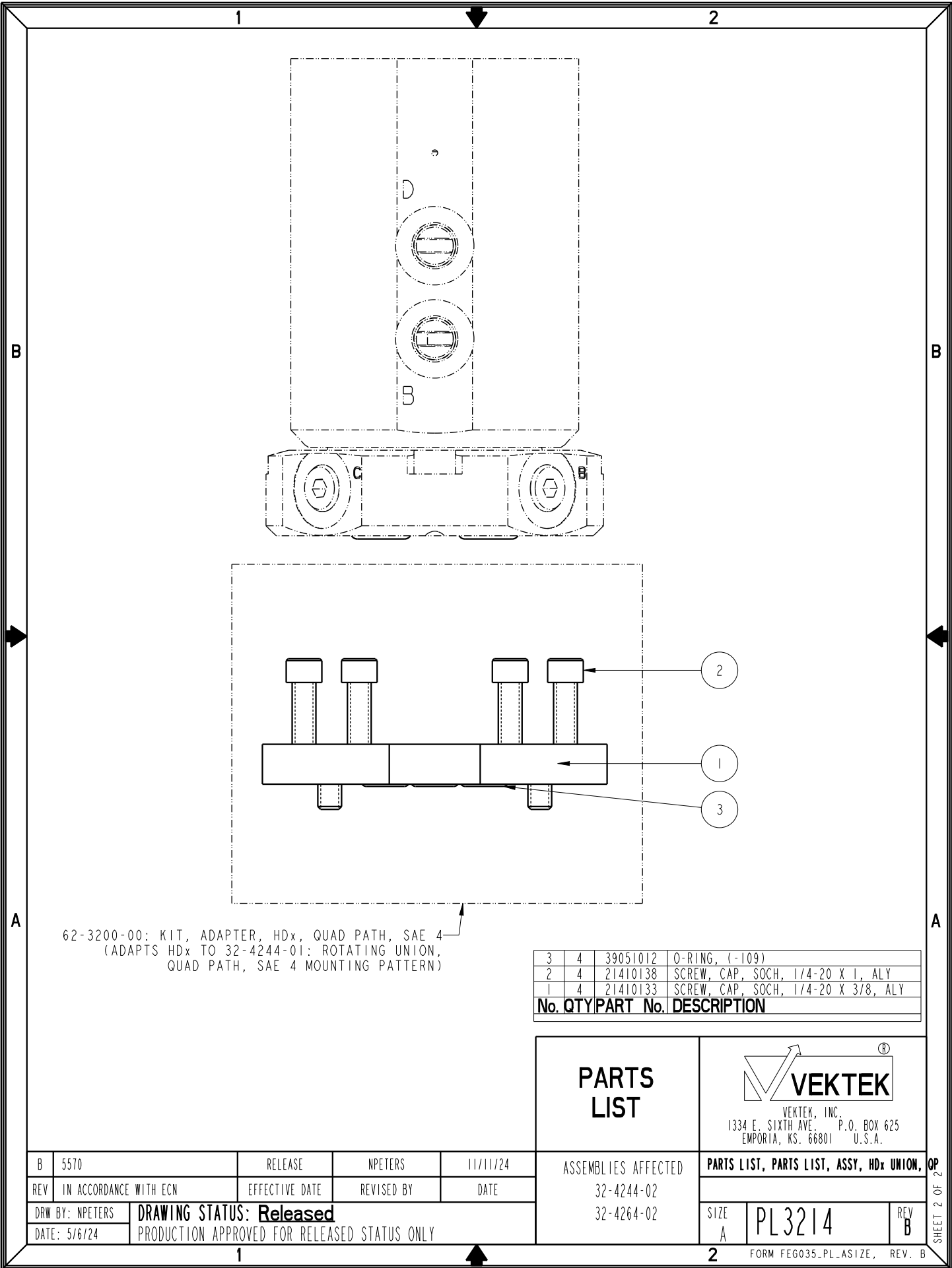
B	5570	RELEASE	NPETERS	11/11/24
REV	IN ACCORDANCE WITH ECN	EFFECTIVE DATE	REVISED BY	DATE
DRW BY: NPETERS	DRAWING STATUS: Released PRODUCTION APPROVED FOR RELEASED STATUS ONLY			
DATE: 5/6/24				

1

2


FORM FEG035_PL_ASIZE, REV. B

SHEET 1 OF 2



62-3200-00: KIT, ADAPTER, HDx, QUAD PATH, SAE 4
 (ADAPTS HDx TO 32-4244-01: ROTATING UNION,
 QUAD PATH, SAE 4 MOUNTING PATTERN)

3	4	39051012	O-RING, (-109)
2	4	21410138	SCREW, CAP, SOCH, 1/4-20 X 1, ALY
1	4	21410133	SCREW, CAP, SOCH, 1/4-20 X 3/8, ALY
No.		QTY	PART No. DESCRIPTION

PARTS LIST	 VEKTEK VEKTEK, INC. 1334 E. SIXTH AVE. P.O. BOX 625 EMPORIA, KS. 66801 U.S.A.	
	ASSEMBLIES AFFECTED	PARTS LIST, PARTS LIST, ASSY, HDx UNION, OP
32-4244-02	SIZE A	PL3214
32-4264-02	REV B	FORM FEG035_PL_ASIZE, REV. B

B	5570	RELEASE	NPETERS	11/11/24
REV	IN ACCORDANCE WITH ECN	EFFECTIVE DATE	REVISED BY	DATE
DRW BY:	NPETERS	DRAWING STATUS: Released		
DATE:	5/6/24	PRODUCTION APPROVED FOR RELEASED STATUS ONLY		

SHEET 2 OF 2